

THE BROOKLINE BY THE STATESMAN GROUP OF COMPANIES

Seniors project honoured by industry

IN SHORT

SHOW SUITE: The Brookline is a one-bedroom apartment condo measuring 587 square feet. **PROJECT:** The Staywell Village Manor. **DEVELOPER:** The seniors' project has been developed by The Statesman Group of Companies. **AREA:** Garrison Woods in southwest Calgary, which has been developed by Canada Lands Co. **PRICE:** The Brookline is priced from \$164,960. The annual lease option begins at \$2,997 per month and the

purchase option begins at \$1,495 per month. **DIRECTIONS:** From Crowchild Trail South, take the Flanders Avenue exit and the overpass over Crowchild Tr. Exit the traffic circle on Garrison Boulevard and turn west on Ypres Green to the show suite and manor village. **HOURS:** The show suites and sales centre are open from 10 a.m. to 5 p.m. from Mondays through Fridays, and from noon to 5 p.m. weekends and holidays.



MARTY HOPE
CALGARY HERALD

Always popular with purchasers, the Brookline floor plan also proved popular with judges at the SAM (Sales and Marketing) Awards.

Created by the Statesman Group of Companies, a one-bedroom show suite in Staywell Manor Village was honoured in the multi-family segment of the awards, which were recently hosted by the Calgary Region Home Builders Association.

The Brookline won the under-800-square-foot category.

"We brought the template for the Brookline with us from other of our existing seniors' communities," says Nicole Blais, vice-president of operations for Statesman. "It's always been popular with our buyers."

Of the 169 units in Garrison Woods by Canada Lands Company, the Brookline accounts for three-quarters of them. "It's a good floor plan and it is priced well," says Blais.

Located on the first floor of the four-storey building, the 587-square-foot Brookline is wheelchair adaptable.

Carpeting is the flooring of choice in the large living room/dining room combination and bedroom, with tile laid down in the kitchen and bathroom.

The countertops in the kitchen and bath have been lowered and there is open space under the sinks in both rooms so that wheelchairs can get up close.

The kitchen comes equipped with a refrigerator and microwave.

The bathroom, which is off the bedroom, has a wheelchair-accessible shower and hand rails to assist residents. There is also a spacious walk-in closet.

Occupancies began in March, about 18 months after Statesman began construction on the project.

People have been moving in at a "fast and furious" pace, says Blais. To date, 35 units have been occupied.

Located on Ypres Green, the building has facilities for independent living on the top floor.

On the lower floors, it also offers independent living for people with some health care requirements, as well as a memory care wing with its own garden and pathway.

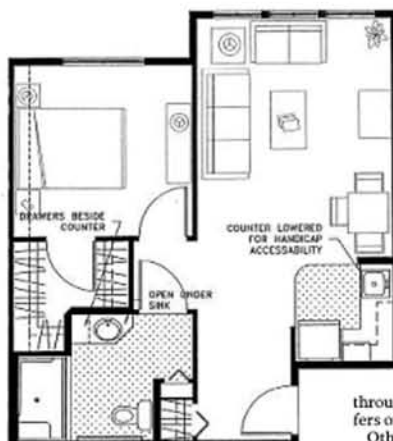
All of the two-bedroom units have been purchased, but there is still a good selection of one-bedroom units, some with facilities for light meals, she says.

There are two residency options available at Staywell, says Blais. The first is



Photos, Marty Hope, Calgary Herald

Chosen best new show home in the under-800-square-foot category, the Brookline has a combination living room/dining room area.



Courtesy, Statesman Group of Companies

Above, this one-bedroom, 587-square-foot floor plan includes a living room, kitchen, dining area and a bathroom with wheelchair-accessible shower.

Left, the exterior of Staywell Manor has pleasing landscaping details.



A games room in the complex provides a place for residents to relax.

through an annual lease and the second of owners ownership plus monthly condo fees.

Other SAM Award winners in the multi-family show home categories were:

■ Beattie Homes in the 1,200 to 1,499-square-foot category for its Chancellor II villa in the Wentworth Landing phase of Dundee Developments' Wentworth community.

■ Jayman MasterBuilt in the 1,500-square-foot-plus category for its Berkeley model townhouse, which is part of the company's Newbury project in Garrison Green by Canada Lands Co.

■ Apex Limited Partnership in the 800 to 1,199 square-foot class for its show suite in Union Square, which Apex will be developing on First Street S.W. between 13th and 14th Avenues.



The complex contains this library area.

